



# InvoTech

## YH series Scroll Compressors

**Special Design For  
A/C and Chiller**

*It is the outstanding engineering capability  
that builds the incomparable reliability*



## **Invotech Scroll Technologies Co., Ltd.**

is a high-tech company.

We design and manufacture 3-15 HP scroll Compressors for refrigerated warehouse, cold room, freezer, A/C & chiller, heat pump etc.

Our company is founded by a group of engineers who formerly worked for the world's largest manufacturer of scroll compressors. We are a team of passionate and highly qualified professionals with more than 15 years of experience in this industry. In addition, we have received investments from several leading venture capital firms in series A funding rounds.

We are dedicated to providing our clients with world-class products and high standard of services.

For more information, please go to our website:

[www.invotech.cn](http://www.invotech.cn)



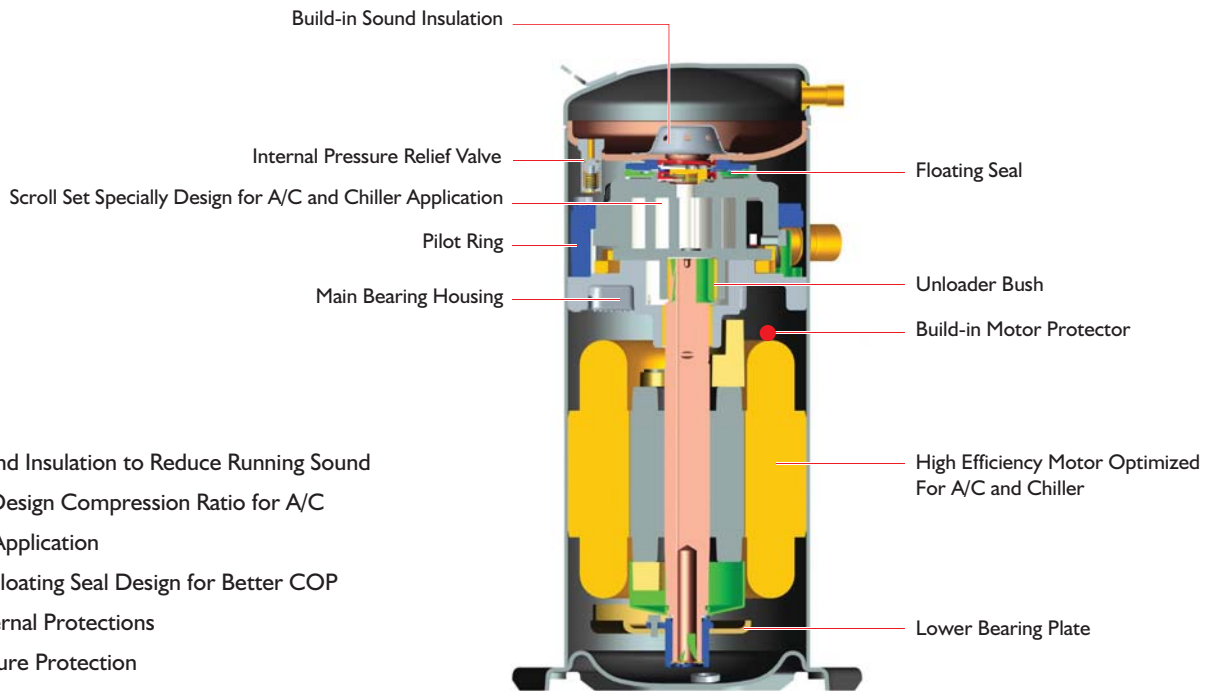
<i>Product Features</i>	<b>1</b>
<i>Models</i>	<b>2</b>
<i>Nomenclature</i>	<b>2</b>
<i>Technical Specifications</i>	
R22	<b>3</b>
R407C	<b>5</b>
R410A	<b>7</b>
<i>Operating Envelope</i>	<b>8</b>
<i>Capacity</i>	
R22	<b>10</b>
R407C	<b>15</b>
R410A	<b>20</b>
<i>Dimensions</i>	<b>23</b>

*It is the outstanding engineering capability  
that builds the incomparable reliability*

# YH Series

## Scroll Compressors With Dual-Compliance For A/C and Chiller

- Specific Design For A/C and Chiller, Not Only The Scroll Set But Also The Unit, Precise Product-Definition Based On Customer's Need
- Both Build-in Radius and Axial Compliance Design, Improved Floating Seal Design for Better Energy Efficiency
- Excellent Discharge Temperature Management to Stretch Operation Envelope
- Accurate Calculation of Load and Sealing Force for Running Sound Optimization
- High Efficiency Motor Design

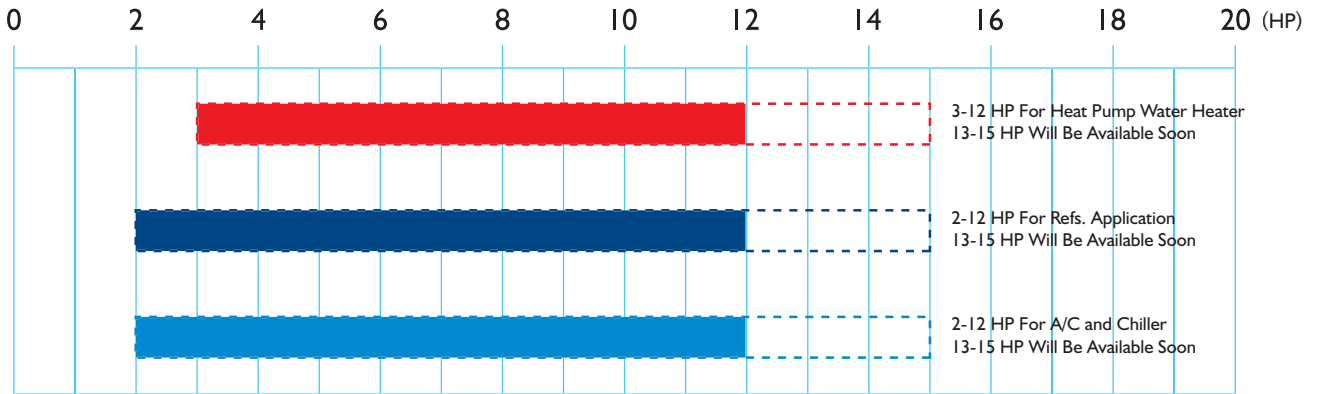


### Features

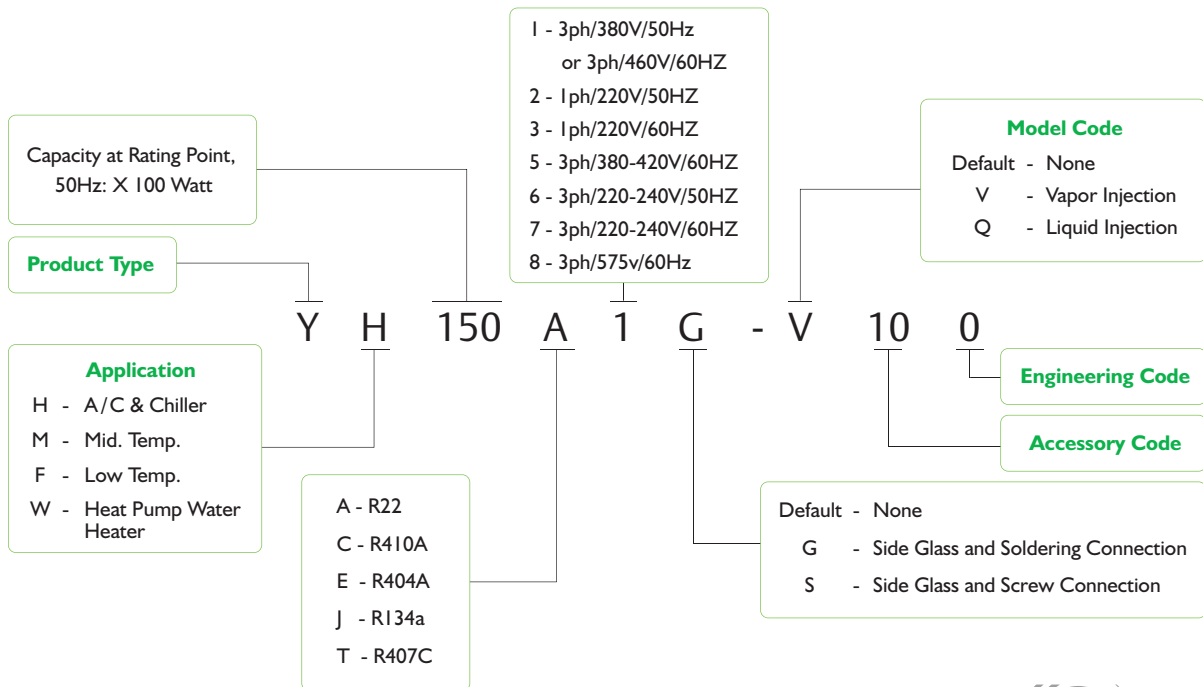
- Build-in Sound Insulation to Reduce Running Sound
- Optimized Design Compression Ratio for A/C and Chiller Application
- Optimized Floating Seal Design for Better COP
- Multiple Internal Protections
  - High Pressure Protection
  - Overload Protection

# YH Series

## Models



## Nomenclature



# YH Series

## Specifications

# R22

Model	YH69A2	YH89A2	YH104A2	YH119A2	YH128A2	YH69A1	YH89A1	YH104A1	YH119A1
Electricity	220V/50Hz/1P					380V/50Hz/3P			
	Single Phase					3 Phase			
Power in Horse Power(HP)	2	3	3.5	3.75	4	2	3	3.5	3.75
Refrigerant	R22								
Cooling Capacity (W)	6800	8900	10600	11900	12800	6800	8900	10600	11900
Power in Watt (W)	2180	2720	3230	3600	3830	2140	2650	3160	3520
COP (W/W)	3.12	3.27	3.28	3.30	3.34	3.18	3.35	3.35	3.38
Running Current (A)	10.3	12.6	15.3	17.0	18.2	4.8	5.0	6.5	7.0
LRA (A)	76	76	109	109	109	45	45	60	60
MOC (A)	14.5	16.8	22.1	28.8	31.0	6.1	8.0	8.6	9.5
Crankcase Heater (W)	70								
Fitting Dimensions (Inch)									
Discharge Tube (OD)	1/2								
Suction Tube (OD)	7/8								
Product Dimensions (MM)									
Length (L)	239								
Width (W)	239								
Height (H)	418								
Feet Dimensions (Hole)	190X190(8.5)								
Oil Type	3GS								
Initial Charge Volume (L)	1.4								
Recharge Volume (L)	1.25								
Max Operating Pressure (MPa)									
High Side	3.0								
Low Side	2.0								
Weight(kg)	31	31	33	33	33	30	30	31	31

Ambient Temp. 35°C, E.T. 7.2°C, C.T. 54.4°C, Subcooling 8.3K, R.G.T. 18.3°C

Model	YH128A1	YH133A1	YH140A1	YH150A1	YH175A1	YH200A1	YH230A1	YH266A1	YH307A1	YH355A1
Electricity	380V/50Hz/3P									
	3 Phase									
Power in Horse Power(HP)	4	4.5	4.75	5	6	7	8	9	10	12
Refrigerant	R22									
Cooling Capacity (W)	12800	13300	14000	15000	17500	20000	23000	26600	30700	35500
Power in Watt (W)	3710	3860	4090	4370	4980	5880	6670	7710	8850	10140
COP (W/W)	3.45	3.45	3.40	3.42	3.50	3.4	3.45	3.40	3.47	3.50
Running Current (A)	7.5	7.7	8.0	8.3	9.0	11.3	12.8	14.5	15.7	17.8
LRA (A)	60	60	60	60	65	117	117	117	121	121
MOC (A)	10.1	10.5	11.0	11.5	13.5	15.5	17.4	19.5	22.3	25.0
Crankcase Heater (W)	70					90				
Fitting Dimensions (Inch)										
Discharge Tube (OD)	1/2					7/8				
Suction Tube (OD)	7/8					1 1/8				
Product Dimensions (MM)										
Length (L)	239					260				
Width (W)	239					244				
Height (H)	418					508				
Feet Dimensions (Hole)	190X190 (8.5)									
Oil Type	3GS									
Initial Charge Volume (L)	1.4					2.7				
Recharge Volume (L)	1.25					2.6				
Max Operating Pressure (MPa)										
High Side	3.0									
Low Side	2.0									
Weight(kg)	31	31	31	31	33	53	53	53	54	54

Ambient Temp. 35°C, E.T. 7.2°C, C.T. 54.4°C, Subcooling 8.3K, R.G.T. 18.3°C

# YH Series

## Specifications

# R407C

Model	YH69T2	YH89T2	YH104T2	YH119T2	YH128T2	YH69T1	YH89T1	YH104T1	YH119T1
Electricity	220V/50Hz/1P Single Phase					380V/50Hz/3P 3 Phase			
Power in Horse Power(HP)	2	3	3.5	3.75	4	2	3	3.5	3.75
Refrigerant	R407C								
Cooling Capacity (W)	6530	8540	10170	11420	12800	6530	8540	10170	11420
Power in Watt (W)	2200	2747	3260	3640	3830	2160	2680	3190	3550
COP (W/W)	2.96	3.11	3.12	3.14	3.18	3.02	3.19	3.18	3.22
Running Current (A)	10.4	12.7	15.5	17.2	18.4	4.8	5.4	6.6	7.1
LRA (A)	76	76	109	109	109	45	45	60	60
MOC (A)	14.6	19.4	22.3	29.0	31.4	6.2	7.6	8.7	9.6
Crankcase Heater (W)	70								
Fitting Dimensions (Inch)									
Discharge Tube (OD)	1/2								
Suction Tube (OD)	7/8								
Product Dimensions (MM)									
Length (L)	239								
Width (W)	239								
Height (H)	418								
Feet Dimensions (Hole)	190X190(8.5)								
Oil Type	POE								
Initial Charge Volume (L)	1.4								
Recharge Volume (L)	1.25								
Max Operating Pressure (MPa)									
High Side	3.0								
Low Side	2.0								
Weight(kg)	31	31	33	33	33	30	30	31	31

Ambient Temp. 35°C, E.T. 7.2°C, C.T. 54.4°C, Subcooling 8.3K, R.G.T. 18.3°C



# YH Series

## Specifications

# R407C

Model	YH128T1	YH133T1	YH140T1	YH150T1	YH175T1	YH200T1	YH230T1	YH266T1	YH307T1	YH355T1
Electricity	380V/50Hz/3P									
	3 Phase									
Power in Horse Power(HP)	4	4.5	4.75	5	6	7	8	9	10	12
Refrigerant	R407C									
Cooling Capacity (W)	12290	12750	13340	14400	16800	19200	22080	25540	29470	34080
Power in Watt (W)	3750	3900	4130	4410	5030	5950	6740	7790	8940	10240
COP (W/W)	3.28	3.27	3.25	3.27	3.34	3.23	3.28	3.28	3.30	3.33
Running Current (A)	7.6	7.8	8.0	8.4	9.1	11.5	12.9	14.6	15.9	18.0
LRA (A)	60	60	60	60	65	117	117	117	121	121
MOC (A)	10.2	10.6	11.1	11.6	13.6	15.7	17.6	19.7	22.5	25.3
Crankcase Heater (W)	70					90				
Fitting Dimensions (Inch)										
Discharge Tube (OD)	1/2					7/8				
Suction Tube (OD)	7/8					1 1/8				
Product Dimensions (MM)										
Length (L)	239					260				
Width (W)	239					244				
Height (H)	418					508				
Feet Dimensions (Hole)	190X190 (8.5)									
Oil Type	POE									
Initial Charge Volume (L)	1.4					2.7				
Recharge Volume (L)	1.25					2.6				
Max Operating Pressure (MPa)										
High Side	3.0									
Low Side	2.0									
Weight(kg)	31	31	31	31	33	53	53	53	54	54

Ambient Temp. 35°C, E.T. 7.2°C, C.T. 54.4°C, Subcooling 8.3K, R.G.T. 18.3°C

# YH Series

## Specifications

# R410A

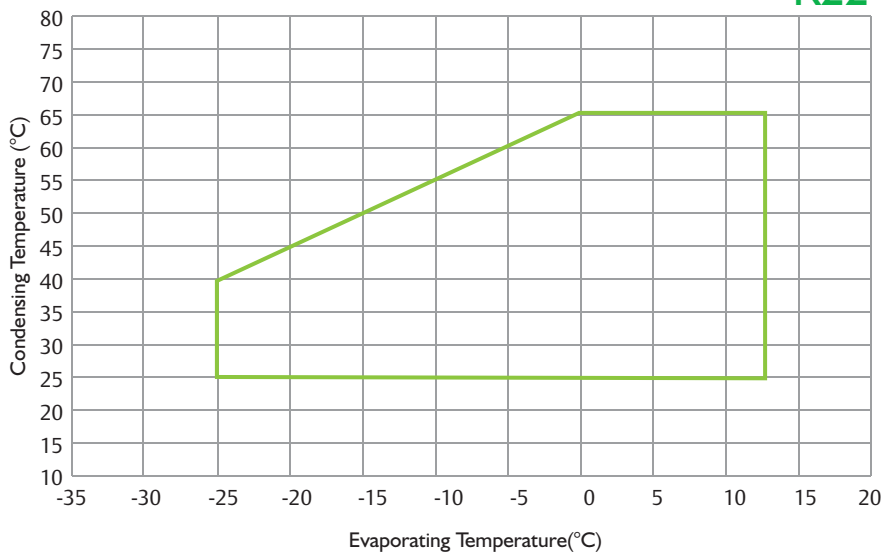
Model	YH95C1 -100	YH128C1 -100	YH150C1 -100	YH175C1 -100	YH183C1 -100	YH230C1 -100	YH266C1 -100	YH292C1 -100	YH325C1 -100
Electricity	380V/50Hz/3P								
Power in Horse Power(HP)	3.5	4.5	5	6	6.5	8	9	10	11
Refrigerant	R410A								
Cooling Capacity (W)	9500	12800	15000	17300	18300	23000	26600	29200	32500
Power in Watt (W)	3170	4183	4854	5545	5810	7210	8340	9070	10100
COP (W/W)	3	3.06	3.09	3.12	3.15	3.19	3.19	3.22	3.22
Running Current (A)	5.8	7.7	8.6	9.7	10.4	13.4	14.8	15.8	17.7
LRA (A)	45	60	60	65	65	117	117	121	121
MOC (A)	7.5	10.6	13	13.5	14	18.3	21.1	23.6	25
Crankcase Heater (W)	70				90				
Fitting Dimensions (Inch)									
Discharge Tube (OD)	1/2				7/8				
Suction Tube (OD)	7/8				11/8				
Product Dimensions (MM)									
Length (L)	239				260				
Width (W)	239				244				
Height (H)	418				508				
Feet Dimensions (Hole)	190 X 190 (8.5)				190 X 190 (8.5)				
Oil Type	POE								
Initial Charge Volume (L)	1.4				2.7				
Recharge Volume (L)	1.25				2.6				
Max Operating Pressure (MPa)									
High Side					4.3				
Low Side					2.0				
Weight(kg)	30	31	31	33	33	53	53	54	54

Ambient Temp. 35°C, E.T. 7.2°C, C.T. 54.4°C, Subcooling 8.3K, R.G.T. 18.3°C

# YH Series

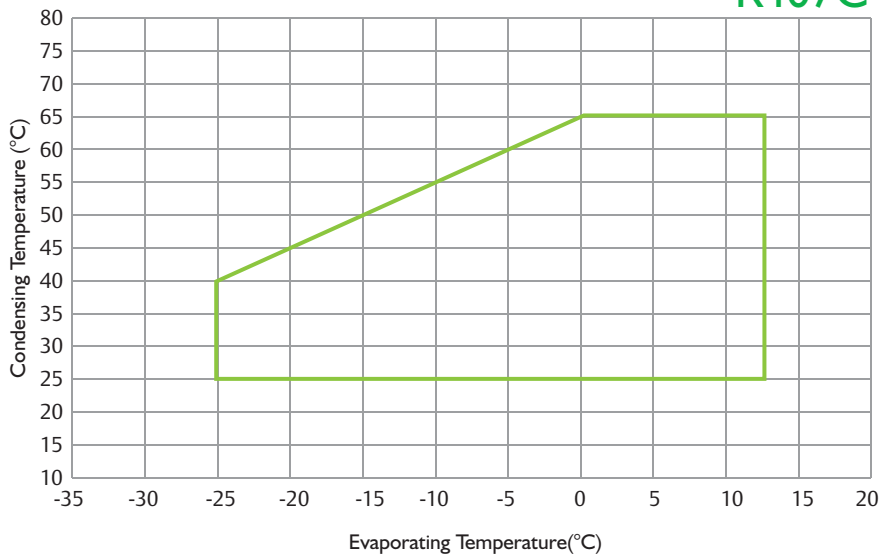
## Operating Envelope

R22



Super Heat 11.1K

R407C

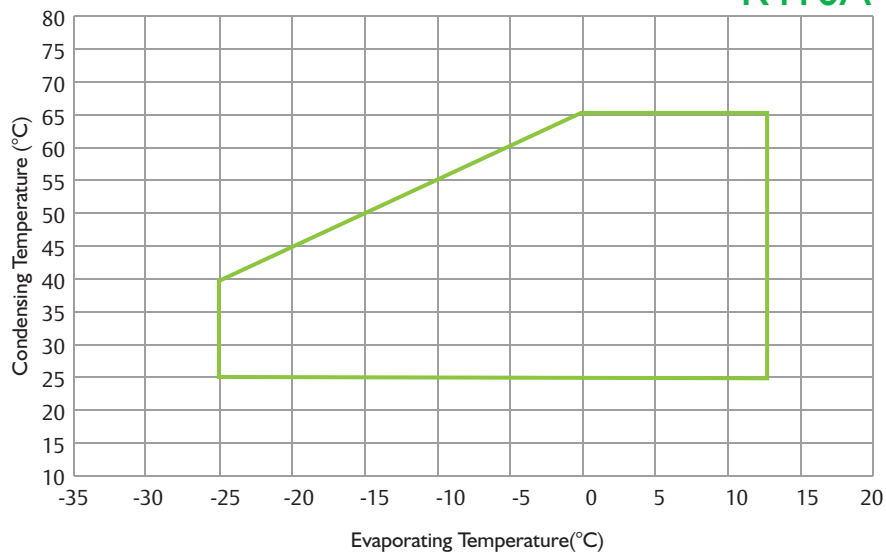


Super Heat 11.1K

# YH Series

## Operating Envelope

R410A



Super Heat 11.1K

Model	C.T. (°C)	E.T.(°C)							
		-20	-15	-10	-5	0	5	10	
YH69A1-100	Capacity (W)	65					4534	5706	6888
		55			3798	4440	5295	6328	7719
		50		2993	3914	4684	5584	6768	8105
		45	2655	3184	4001	4936	5880	7075	8485
		40	2747	3375	4250	5185	6172	7372	8825
		35	2840	3566	4500	5434	6465	7669	9166
		25	2933	3757	4580	5894	6987	8185	8998
	Watt (W)	65					2537	2448	2449
		55			2044	2059	2151	2109	2078
		50		1807	1854	1933	2016	1954	1940
		45	1619	1647	1753	1821	1869	1788	1791
		40	1504	1552	1645	1708	1743	1677	1693
		35	1389	1457	1536	1595	1616	1567	1595
		25	1161	1242	1334	1405	1446	1402	1375
YH89A1-100	Capacity (W)	65					5849	7360	8885
		55			4899	5727	6830	8162	9957
		50		3860	5048	6042	7203	8730	10454
		45	3424	4107	5160	6367	7585	9126	10944
		40	3544	4353	5482	6688	7962	9509	11383
		35	3664	4599	5804	7009	8338	9892	11823
		25	3783	4845	5907	7603	9013	10557	11606
	Watt (W)	65					3208	3096	3097
		55			2585	2603	2720	2667	2628
		50		2285	2345	2444	2549	2471	2453
		45	2048	2083	2217	2303	2364	2261	2264
		40	1902	1962	2080	2160	2204	2121	2141
		35	1756	1842	1943	2017	2043	1981	2017
		25	1468	1571	1686	1777	1829	1773	1739
YH104A1-100	Capacity (W)	65					6966	8766	10582
		55			5835	6821	8135	9721	11858
		50		4598	6012	7196	8578	10398	12451
		45	4078	4891	6146	7583	9034	10869	13034
		40	4221	5184	6529	7965	9482	11325	13558
		35	4363	5478	6913	8348	9931	11781	14081
		25	4506	5771	7036	9055	10734	12574	13823
	Watt (W)	65					3783	3650	3651
		55			3048	3069	3207	3145	3098
		50		2694	2765	2882	3006	2914	2892
		45	2414	2456	2614	2715	2787	2665	2670
		40	2242	2314	2453	2546	2598	2501	2524
		35	2071	2172	2291	2378	2409	2336	2379
		25	1731	1853	1988	2095	2156	2091	2051

Capacity @ 11K Super Heat, 8.3K Subcooling

# YH Series

## Capacity

# R22

Model	C.T. (°C)	E.T.(°C)							
		-20	-15	-10	-5	0	5	10	
YHI19AI-100	Capacity (W)	65					7820	9841	11880
		55			6551	7657	9132	10913	13313
		50		5162	6749	8078	9630	11673	13978
		45	4578	5491	6899	8513	10141	12202	14633
		40	4738	5820	7330	8942	10645	12714	15220
		35	4899	6149	7761	9372	11149	13226	15808
		25	5059	6479	7898	10166	12051	14116	15518
	Watt (W)	65					4247	4098	4099
		55			3421	3446	3601	3531	3478
		50		3024	3104	3235	3375	3272	3247
		45	2710	2757	2935	3048	3129	2992	2997
		40	2517	2598	2753	2859	2917	2808	2834
		35	2324	2438	2572	2669	2705	2623	2670
		25	1943	2080	2232	2352	2421	2347	2302
YHI28AI-100	Capacity (W)	65					8497	10692	12907
		55			7117	8319	9922	11857	14464
		50		5608	7333	8777	10463	12683	15187
		45	4974	5966	7496	9249	11019	13257	15898
		40	5148	6324	7964	9716	11566	13814	16537
		35	5322	6681	8432	10182	12113	14370	17175
		25	5496	7039	8582	11045	13093	15337	16860
	Watt (W)	65					4523	4365	4366
		55			3644	3670	3835	3761	3705
		50		3221	3306	3446	3595	3485	3458
		45	2887	2937	3126	3247	3333	3187	3193
		40	2682	2767	2933	3045	3107	2991	3019
		35	2476	2597	2739	2843	2881	2794	2844
		25	2070	2215	2378	2505	2578	2500	2452
YHI33AI-100	Capacity (W)	65					8829	11110	13412
		55			7395	8644	10310	12321	15029
		50		5827	7620	9120	10872	13178	15781
		45	5168	6199	7789	9610	11449	13775	16519
		40	5349	6571	8275	10095	12018	14353	17183
		35	5530	6942	8761	10580	12587	14931	17846
		25	5711	7314	8917	11476	13604	15936	17519
	Watt (W)	65					4700	4536	4537
		55			3787	3814	3985	3908	3850
		50		3347	3436	3581	3735	3621	3593
		45	3000	3052	3249	3374	3463	3312	3317
		40	2786	2875	3048	3164	3228	3107	3137
		35	2573	2699	2846	2954	2993	2903	2956
		25	2151	2302	2471	2603	2679	2598	2548

Capacity @ 11K Super Heat, 8.3K Subcooling

Model	C.T. (°C)	E.T.(°C)						
		-20	-15	-10	-5	0	5	10
<b>YHI40AI-100</b>	Capacity (W)	65				9293	11695	14117
		55			7785	9099	10852	12969
		50		6134	8021	9600	11444	13872
		45	5441	6525	8199	10116	12052	14500
		40	5631	6916	8711	10626	12650	15109
		35	5821	7308	9222	11137	13249	15717
		25	6012	7699	9386	12080	14320	16775
	Watt (W)	65					4948	4774
		55			3986	4015	4195	4114
		50		3523	3616	3769	3932	3812
		45	3158	3212	3420	3551	3646	3486
		40	2933	3026	3208	3331	3398	3271
		35	2708	2841	2996	3110	3151	3056
		25	2264	2423	2601	2740	2820	2735
<b>YHI50AI-100</b>	Capacity (W)	65				9957	12530	15126
		55			8341	9749	11628	13895
		50		6572	8594	10285	12262	14862
		45	5829	6991	8785	10839	12912	15536
		40	6033	7410	9333	11385	13554	16188
		35	6237	7830	9881	11932	14195	16840
		25	6441	8249	10057	12943	15343	17973
	Watt (W)	65					5301	5115
		55			4271	4301	4494	4407
		50		3775	3875	4039	4212	4084
		45	3383	3442	3664	3805	3906	3735
		40	3142	3243	3437	3568	3641	3505
		35	2902	3043	3210	3332	3376	3274
		25	2425	2596	2786	2936	3022	2930
<b>YHI75AI-100</b>	Capacity (W)	65				11617	14618	17647
		55			9731	11374	13566	16211
		50		7667	10026	12000	14305	17339
		45	6801	8157	10249	12645	15064	18125
		40	7039	8646	10888	13283	15813	18886
		35	7277	9135	11528	13921	16561	19646
		25	7515	9624	11733	15101	17900	20968
	Watt (W)	65					6096	5883
		55			4911	4947	5169	5069
		50		4341	4456	4644	4844	4696
		45	3891	3958	4213	4376	4492	4296
		40	3614	3729	3953	4104	4187	4030
		35	3337	3500	3692	3832	3882	3765
		25	2789	2986	3204	3376	3475	3369

Capacity @ 11K Super Heat, 8.3K Subcooling

# YH Series

## Capacity

# R22

Model	C.T. (°C)	E.T.(°C)							
		-20	-15	-10	-5	0	5	10	
YH200A1-100	Capacity (W)	65					14829	16092	19462
		55			10648	12738	15617	18851	22364
		50		9197	11139	13692	16686	20050	23535
		45	7883	9585	11910	14681	17754	21204	24677
		40	8197	10214	12640	15452	18662	22078	25848
		35	8723	10848	13395	16314	19479	22946	27019
		25	9517	11762	14127	17308	20399	24283	28047
	Watt (W)	65					7627	7693	7759
		55			6046	6093	6117	6171	6213
		50		5312	5389	5461	5485	5568	5616
		45	4721	4757	4846	4870	4930	4959	5121
		40	4196	4297	4321	4381	4452	4458	4631
		35	3707	3790	3897	3963	3995	4076	4214
		25	3175	3282	3414	3491	3641	3658	3706
YH230A1-100	Capacity (W)	65					16819	18251	22074
		55			12077	14448	17713	21380	25365
		50		10431	12634	15530	18925	22741	26693
		45	8941	10872	13508	16651	20136	24050	27989
		40	9297	11584	14336	17525	21166	25041	29317
		35	9893	12303	15193	18504	22093	26026	30645
		25	10794	13340	16022	19631	23136	27542	31811
	Watt (W)	65					8694	8769	8844
		55			6891	6946	6973	7034	7082
		50		6055	6143	6225	6252	6347	6401
		45	5381	5422	5524	5551	5619	5653	5837
		40	4782	4898	4925	4993	5075	5082	5279
		35	4225	4320	4442	4517	4554	4646	4803
		25	3619	3742	3891	3980	4150	4170	4225
YH266A1-100	Capacity (W)	65					19452	21108	25529
		55			13967	16709	20486	24727	29335
		50		12064	14611	17961	21887	26300	30871
		45	10340	12573	15623	19257	23288	27814	32370
		40	10752	13397	16580	20268	24479	28960	33906
		35	11442	14229	17571	21400	25551	30099	35442
		25	12483	15428	18530	22704	26757	31853	36790
	Watt (W)	65					9720	9803	9887
		55			7704	7765	7795	7864	7917
		50		6769	6868	6959	6989	7096	7157
		45	6016	6061	6176	6206	6282	6320	6525
		40	5347	5476	5506	5582	5674	5681	5902
		35	4724	4829	4966	5050	5091	5194	5370
		25	4046	4183	4350	4449	4639	4662	4723

Capacity @ 11K Super Heat, 8.3K Subcooling



Model	C.T. (°C)	E.T.(°C)							
		-20	-15	-10	-5	0	5	10	
YH307A1-100	Capacity (W)	65					22377	24282	29367
		55			16067	19222	23566	28445	33746
		50		13878	16808	20661	25178	30255	35513
		45	11895	14464	17972	22153	26790	31996	37237
		40	12369	15412	19073	23316	28161	33315	39004
		35	13162	16369	20213	24618	29393	34625	40771
		25	14360	17748	21317	26118	30781	36642	42323
		65					11126	11222	11318
		55			8819	8889	8924	9002	9063
		50		7748	7861	7966	8001	8123	8192
		45	6886	6939	7069	7104	7191	7235	7470
		40	6120	6268	6303	6390	6495	6503	6756
		35	5407	5528	5685	5781	5828	5946	6147
		25	4632	4788	4980	5093	5311	5337	5406
YH355A1-100	Capacity (W)	65					25960	28170	34070
		55			18640	22300	27340	33000	39150
		50		16100	19500	23970	29210	35100	41200
		45	13800	16780	20850	25700	31080	37120	43200
		40	14350	17880	22127	27050	32670	38650	45250
		35	15270	18990	23450	28560	34100	40170	47300
		25	16660	20590	24730	30300	35710	42510	49100
		65					12780	12890	13000
		55			10130	10210	10250	10340	10410
		50		8900	9030	9150	9190	9330	9410
		45	7910	7970	8120	8160	8260	8310	8580
		40	7030	7200	7240	7340	7460	7470	7760
		35	6211	6350	6530	6640	6694	6830	7061
		25	5320	5500	5720	5850	6100	6130	6210

Capacity @ 11K Super Heat, 8.3K Subcooling

# YH Series

## Capacity

# R407C

Model	C.T. (°C)	E.T.(°C)							
		-20	-15	-10	-5	0	5	10	
YH69TI-100	Capacity (W)	65				4353	5478	6613	
		55			3646	4262	5083	7410	
		50		2873	3757	4497	5361	6498	7781
		45	2548	3056	3841	4738	5645	6792	8145
		40	2638	3240	4080	4978	5926	7077	8472
		35	2727	3423	4320	5217	6206	7362	8799
		25	2816	3606	4397	5659	6708	7857	8638
	Watt (W)	65					2562	2473	2473
		55			2064	2079	2172	2130	2099
		50		1825	1873	1952	2036	1974	1959
		45	1635	1664	1771	1839	1888	1806	1809
		40	1519	1567	1661	1725	1760	1694	1710
		35	1403	1471	1552	1611	1632	1583	1611
		25	1172	1255	1347	1419	1461	1416	1389
YH89TI-100	Capacity (W)	65				5615	7066	8529	
		55			4703	5498	6557	7836	9558
		50		3706	4846	5800	6914	8381	10036
		45	3287	3942	4954	6112	7281	8761	10506
		40	3402	4179	5263	6420	7643	9128	10928
		35	3517	4415	5572	6729	8005	9496	11350
		25	3632	4652	5671	7299	8652	10135	11142
	Watt (W)	65					3240	3127	3127
		55			2611	2629	2747	2694	2654
		50		2307	2368	2469	2575	2496	2477
		45	2068	2104	2239	2326	2388	2283	2287
		40	1921	1982	2101	2181	2226	2142	2162
		35	1774	1860	1962	2037	2064	2001	2037
		25	1483	1587	1703	1795	1847	1791	1757
YH104TI-100	Capacity (W)	65				6561	8256	9967	
		55			5496	6424	7662	9156	11169
		50		4331	5663	6778	8080	9793	11728
		45	3841	4607	5789	7142	8509	10237	12277
		40	3975	4883	6150	7502	8931	10667	12770
		35	4110	5159	6511	7863	9354	11096	13263
		25	4244	5436	6627	8529	10110	11843	13019
	Watt (W)	65					3786	3653	3654
		55			3050	3072	3210	3148	3101
		50		2696	2767	2884	3008	2917	2894
		45	2416	2458	2617	2717	2790	2668	2672
		40	2244	2316	2455	2549	2600	2503	2526
		35	2072	2174	2293	2380	2411	2338	2381
		25	1732	1854	1990	2097	2158	2093	2052

Capacity @ 11K Super Heat, 8.3K Subcooling

Model	C.T. (°C)	E.T.(°C)							
		-20	-15	-10	-5	0	5	10	
<b>YHI19TI-100</b>	Capacity (W)	65					7507	9447	11405
		55			6289	7351	8767	10477	12780
		50		4955	6479	7755	9245	11206	13419
		45	4395	5271	6623	8172	9736	11714	14047
		40	4549	5587	7037	8584	10219	12205	14612
		35	4703	5903	7450	8997	10703	12697	15176
		25	4856	6219	7583	9759	11569	13551	14897
	Watt (W)	65					4289	4139	4140
		55			3456	3480	3637	3566	3513
		50		3054	3135	3268	3408	3304	3279
		45	2738	2785	2964	3079	3160	3022	3027
		40	2543	2624	2781	2887	2946	2836	2862
		35	2348	2463	2598	2696	2732	2649	2697
		25	1963	2101	2255	2376	2445	2371	2325
<b>YHI28TI-100</b>	Capacity (W)	65					8157	10264	12391
		55			6833	7987	9525	11383	13886
		50		5384	7040	8426	10045	12175	14580
		45	4775	5727	7196	8879	10578	12727	15262
		40	4942	6071	7645	9327	11103	13261	15875
		35	5109	6414	8094	9775	11629	13795	16488
		25	5277	6757	8238	10603	12569	14723	16186
	Watt (W)	65					4569	4409	4410
		55			3681	3707	3874	3799	3742
		50		3253	3339	3481	3630	3520	3493
		45	2916	2966	3158	3279	3366	3219	3225
		40	2708	2795	2962	3075	3138	3021	3049
		35	2501	2623	2767	2872	2910	2822	2873
		25	2090	2237	2401	2530	2604	2525	2477
<b>YHI33TI-100</b>	Capacity (W)	65					8475	10665	12875
		55			7100	8299	9897	11828	14428
		50		5594	7315	8755	10437	12651	15150
		45	4962	5951	7477	9226	10991	13224	15859
		40	5135	6308	7944	9691	11537	13779	16496
		35	5309	6665	8411	10157	12083	14334	17133
		25	5483	7021	8560	11017	13060	15298	16818
	Watt (W)	65					4747	4581	4582
		55			3825	3852	4025	3947	3888
		50		3381	3470	3617	3772	3657	3629
		45	3030	3082	3281	3407	3498	3345	3351
		40	2814	2904	3078	3196	3261	3139	3168
		35	2598	2726	2875	2984	3023	2932	2985
		25	2172	2325	2495	2629	2706	2624	2573

Capacity @ 11K Super Heat, 8.3K Subcooling

# YH Series

## Capacity

# R407C

Model	C.T. (°C)	E.T.(°C)							
		-20	-15	-10	-5	0	5	10	
YHI40TI-100	Capacity (W)	65					8922	11227	13553
		55			7473	8735	10418	12450	15187
		50		5889	7700	9216	10987	13317	15947
		45	5223	6264	7871	9711	11570	13920	16693
		40	5406	6640	8362	10201	12144	14504	17364
		35	5588	7015	8853	10691	12719	15088	18034
		25	5771	7391	9011	11597	13748	16104	17703
	Watt (W)	65					4997	4822	4823
		55			4026	4055	4237	4155	4093
		50		3558	3652	3807	3971	3850	3820
		45	3189	3244	3454	3587	3682	3521	3527
		40	2962	3057	3240	3364	3432	3304	3335
		35	2735	2869	3026	3141	3182	3086	3142
		25	2286	2447	2627	2768	2848	2762	2709
YHI50TI-100	Capacity (W)	65					9559	12029	14521
		55			8007	9359	11163	13340	16272
		50		6309	8250	9874	11771	14268	17086
		45	5596	6712	8433	10405	12396	14914	17886
		40	5792	7114	8959	10930	13012	15540	18604
		35	5988	7516	9486	11455	13628	16166	19322
		25	6183	7919	9654	12426	14730	17254	18968
	Watt (W)	65					5354	5166	5168
		55			4314	4344	4539	4452	4385
		50		3813	3913	4079	4254	4125	4093
		45	3417	3476	3700	3843	3945	3773	3779
		40	3174	3275	3471	3604	3677	3540	3573
		35	2931	3074	3242	3365	3410	3307	3367
		25	2450	2622	2814	2965	3052	2959	2902
YHI75TI-100	Capacity (W)	65					11152	14033	16941
		55			9342	10919	13023	15563	18984
		50		7361	9625	11520	13733	16646	19934
		45	6529	7830	9839	12139	14462	17400	20867
		40	6757	8300	10453	12752	15180	18130	21705
		35	6986	8769	11067	13364	15899	18860	22543
		25	7214	9239	11263	14497	17184	20130	22129
	Watt (W)	65					6157	5941	5943
		55			4961	4996	5220	5119	5043
		50		4384	4500	4691	4893	4743	4707
		45	3930	3998	4255	4419	4537	4339	4346
		40	3650	3766	3992	4145	4229	4071	4109
		35	3370	3535	3729	3870	3921	3803	3872
		25	2817	3015	3236	3410	3510	3403	3338

Capacity @ 11K Super Heat, 8.3K Subcooling

Model	C.T. (°C)	E.T.(°C)							
		-20	-15	-10	-5	0	5	10	
YH200TI-100	Capacity (W)	65					14236	15448	18683
		55			10222	12229	14993	18097	21469
		50		8829	10693	13145	16018	19248	22593
		45	7568	9202	11434	14093	17044	20356	23690
		40	7869	9805	12134	14834	17916	21195	24814
		35	8374	10414	12860	15662	18700	22028	25938
		25	9136	11291	13561	16616	19583	23312	26926
	Watt (W)	65					7703	7770	7836
		55			6106	6154	6178	6233	6275
		50		5365	5443	5515	5540	5624	5672
		45	4768	4804	4895	4919	4979	5009	5172
		40	4238	4340	4364	4424	4497	4503	4678
		35	3744	3828	3936	4002	4035	4117	4256
		25	3207	3315	3448	3526	3677	3695	3743
YH230TI-100	Capacity (W)	65					16146	17521	21191
		55			11594	13870	17005	20525	24350
		50		10014	12128	14909	18168	21831	25625
		45	8583	10437	12968	15985	19331	23088	26869
		40	8925	11121	13762	16824	20320	24039	28144
		35	9498	11811	14585	17764	21209	24985	29419
		25	10362	12806	15381	18846	22211	26440	30539
	Watt (W)	65					8781	8857	8932
		55			6960	7015	7043	7104	7153
		50		6115	6204	6287	6314	6410	6465
		45	5435	5476	5579	5607	5675	5710	5895
		40	4830	4947	4974	5043	5126	5133	5332
		35	4267	4363	4487	4562	4599	4693	4852
		25	3655	3779	3930	4019	4191	4212	4267
YH266TI-100	Capacity (W)	65					18674	20263	24507
		55			13408	16041	19666	23738	28162
		50		11581	14027	17242	21011	25248	29636
		45	9927	12070	14998	18487	22357	26701	31075
		40	10322	12862	15916	19458	23500	27802	32549
		35	10984	13660	16868	20544	24529	28895	34024
		25	11984	14811	17789	21796	25687	30578	35319
	Watt (W)	65					9817	9901	9986
		55			7781	7843	7873	7943	7996
		50		6836	6936	7028	7059	7167	7228
		45	6076	6122	6237	6268	6345	6383	6591
		40	5400	5531	5561	5638	5730	5738	5961
		35	4771	4878	5016	5100	5142	5246	5424
		25	4087	4225	4394	4494	4686	4709	4770

Capacity @ 11K Super Heat, 8.3K Subcooling

# YH Series

## Capacity

# R407C

Model	C.T. (°C)	E.T.(°C)							
		-20	-15	-10	-5	0	5	10	
<b>YH307TI-100</b>	Capacity (W)	65					21482	23310	28193
		55			15424	18453	22624	27307	32396
		50		13323	16136	19835	24171	29045	34093
		45	11419	13885	17253	21267	25718	30717	35748
		40	11875	14796	18310	22384	27034	31983	37444
		35	12636	15714	19405	23633	28218	33240	39140
		25	13786	17038	20464	25073	29550	35177	40630
	Watt (W)	65					11237	11334	11431
		55			8907	8978	9013	9092	9153
		50		7826	7940	8046	8081	8204	8274
		45	6955	7008	7140	7175	7263	7307	7544
		40	6181	6331	6366	6454	6560	6568	6823
		35	5461	5584	5742	5839	5886	6006	6209
		25	4678	4836	5030	5144	5364	5390	5460
<b>YH355TI-100</b>	Capacity (W)	65					24922	27043	32707
		55			17894	21408	26246	31680	37584
		50		15456	18720	23011	28042	33696	39552
		45	13248	16109	20016	24672	29837	35635	41472
		40	13776	17165	21242	25968	31363	37104	43440
		35	14659	18230	22512	27418	32736	38563	45408
		25	15994	19766	23741	29088	34282	40810	47136
	Watt (W)	65					12908	13019	13130
		55			10231	10312	10353	10443	10514
		50		8989	9120	9242	9282	9423	9504
		45	7989	8050	8201	8242	8343	8393	8666
		40	7100	7272	7312	7413	7535	7545	7838
		35	6273	6414	6595	6706	6761	6898	7132
		25	5373	5555	5777	5909	6161	6191	6272

Capacity @ 11K Super Heat, 8.3K Subcooling

Model	C.T. (°C)	E.T.(°C)							
		-20	-15	-10	-5	0	5	10	
YH95CI-100	Capacity (W)	65					5326	6745	8244
		55			4219	5663	6932	8272	9881
		50		3719	4885	6261	7552	8938	10631
		45	3172	4311	5385	6773	8115	9548	11353
		40	3625	4748	5801	7257	8622	10159	12047
		35	4092	5114	6190	7684	9130	10742	12740
		25	4304	5481	6578	8111	9637	11325	13434
	Watt (W)	65					3751	3731	3731
		55			2985	2986	2972	2956	2956
		50		2639	2646	2660	2657	2644	2646
		45	2372	2387	2365	2374	2372	2359	2368
		40	2112	2134	2113	2121	2121	2113	2124
		35	1890	1905	1886	1895	1898	1897	1915
		25	1668	1676	1659	1670	1676	1682	1705
YH128CI-100	Capacity (W)	65					7633	9668	11816
		55			6047	8117	9935	11856	14163
		50		5331	7002	8974	10824	12811	15238
		45	4546	6179	7718	9708	11632	13686	16272
		40	5195	6805	8315	10401	12359	14561	17267
		35	5865	7330	8872	11013	13086	15397	18261
		25	6169	7855	9429	11625	13813	16232	19256
	Watt (W)	65					5325	5297	5297
		55			4238	4239	4219	4197	4197
		50		3746	3757	3776	3772	3753	3757
		45	3367	3388	3358	3371	3367	3350	3362
		40	2998	3030	2999	3010	3010	2999	3015
		35	2683	2705	2677	2691	2695	2694	2718
		25	2367	2379	2355	2371	2380	2388	2421
YH150CI-100	Capacity (W)	65					9142	11579	14152
		55			7243	9722	11899	14200	16963
		50		6385	8386	10748	12964	15343	18250
		45	5445	7401	9244	11627	13931	16391	19489
		40	6222	8151	9959	12457	14802	17440	20680
		35	7024	8779	10626	13190	15672	18440	21871
		25	7389	9408	11293	13923	16543	19441	23062
	Watt (W)	65					6316	6284	6284
		55			5027	5028	5004	4979	4979
		50		4444	4457	4479	4475	4452	4457
		45	3994	4019	3983	3998	3994	3973	3988
		40	3556	3594	3557	3571	3571	3557	3577
		35	3182	3208	3176	3192	3197	3195	3224
		25	2808	2822	2794	2813	2823	2832	2871

Capacity @ 11K Super Heat, 8.3K Subcooling

# YH Series

## Capacity

# R410A

Model	C.T. (°C)	E.T.(°C)							
		-20	-15	-10	-5	0	5	10	
YHI75CI-100	Capacity (W)	65					10207	12928	15801
		55			8087	10854	13286	15854	18940
		50		7129	9363	12000	14474	17131	20376
		45	6079	8263	10321	12982	15554	18301	21759
		40	6947	9100	11119	13909	16526	19472	23089
		35	7843	9802	11864	14727	17498	20589	24419
		25	8250	10504	12609	15545	18470	21706	25749
	Watt (W)	65					7052	7016	7016
		55			5613	5614	5587	5559	5559
		50		4961	4976	5001	4996	4970	4976
		45	4459	4487	4447	4464	4459	4436	4452
		40	3971	4013	3972	3987	3987	3972	3994
		35	3553	3582	3546	3564	3569	3567	3600
		25	3135	3151	3119	3141	3152	3162	3206
YHI83CI-100	Capacity (W)	65					11603	14079	16915
		55			9204	11404	13894	16716	20000
		50		8012	10050	12350	15040	18059	21492
		45	6811	8727	10895	13346	16135	19303	22985
		40	7415	9443	11691	14243	17181	20497	24278
		35	8019	10089	12438	15089	18077	21492	25472
		25	8999	11133	13532	16235	19372	22985	27064
	Watt (W)	65					7395	7423	7383
		55			5876	5902	5908	5914	5890
		50		5291	5269	5284	5289	5295	5283
		45	4703	4729	4721	4736	4741	4755	4756
		40	4211	4257	4243	4247	4261	4276	4279
		35	3799	3825	3805	3819	3822	3846	3861
		25	3296	3313	3297	3300	3303	3327	3343
YH230CI-100	Capacity (W)	65					13669	17312	21159
		55			10829	14535	17791	21230	25363
		50		9547	12539	16069	19382	22940	27286
		45	8140	11065	13821	17384	20829	24508	29138
		40	9303	12186	14890	18626	22131	26075	30919
		35	10503	13127	15887	19721	23432	27571	32701
		25	11048	14067	16885	20817	24734	29067	34482
	Watt (W)	65					9260	9212	9212
		55			7370	7372	7337	7299	7299
		50		6515	6534	6567	6560	6527	6534
		45	5855	5892	5839	5862	5855	5825	5846
		40	5214	5269	5216	5235	5235	5216	5244
		35	4665	4704	4656	4680	4687	4684	4727
		25	4117	4138	4096	4124	4138	4153	4209

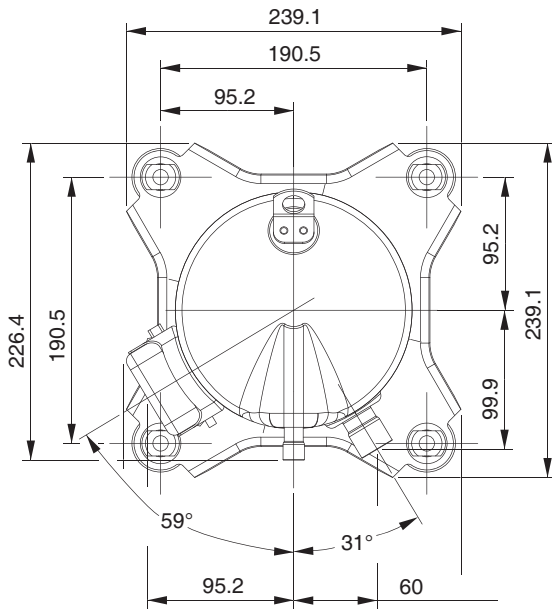
Capacity @ 11K Super Heat, 8.3K Subcooling



Model	C.T. (°C)	E.T.(°C)							
		-20	-15	-10	-5	0	5	10	
<b>YH266CI-100</b>	Capacity (W)	65					15799	20010	24457
		55			12517	16801	20564	24539	29315
		50		11034	14493	18574	22403	26515	31538
		45	9409	12790	15975	20093	24075	28327	33679
		40	10753	14085	17210	21528	25580	30139	35738
		35	12139	15172	18363	22795	27084	31868	37797
		25	12769	16259	19516	24061	28589	33597	39855
	Watt (W)	65					10703	10648	10648
		55			8519	8521	8480	8437	8437
		50		7530	7552	7591	7583	7544	7552
		45	6767	6810	6749	6776	6767	6733	6758
		40	6026	6090	6029	6051	6051	6029	6061
		35	5393	5437	5381	5409	5417	5414	5463
		25	4759	4783	4734	4767	4783	4800	4865
<b>YH292CI-100</b>	Capacity (W)	65					17841	22596	27617
		55			14134	18971	23221	27710	33103
		50		12460	16366	20974	25298	29941	35614
		45	10625	14442	18039	22690	27186	31987	38031
		40	12143	15906	19434	24310	28885	34033	40356
		35	13708	17133	20736	25740	30584	35986	42681
		25	14419	18360	22038	27170	32283	37938	45005
	Watt (W)	65					11966	11905	11905
		55			9524	9527	9481	9432	9432
		50		8419	8443	8487	8478	8434	8443
		45	7566	7614	7546	7575	7566	7528	7555
		40	6738	6809	6740	6765	6765	6740	6777
		35	6029	6078	6017	6047	6057	6053	6108
		25	5320	5347	5293	5330	5348	5366	5440
<b>YH325CI-100</b>	Capacity (W)	65					18995	24057	29403
		55			15048	20199	24723	29502	35244
		50		13266	17424	22330	26934	31878	37917
		45	11312	15377	19206	24157	28944	34056	40491
		40	12928	16934	20691	25883	30753	36234	42966
		35	14595	18241	22077	27405	32562	38313	45441
		25	15352	19547	23463	28928	34371	40392	47916
	Watt (W)	65					12740	12675	12675
		55			10140	10143	10094	10043	10043
		50		8964	8990	9036	9026	8980	8990
		45	8056	8107	8034	8065	8056	8015	8044
		40	7174	7250	7176	7203	7203	7176	7215
		35	6419	6471	6406	6439	6448	6445	6503
		25	5664	5693	5636	5674	5694	5714	5792

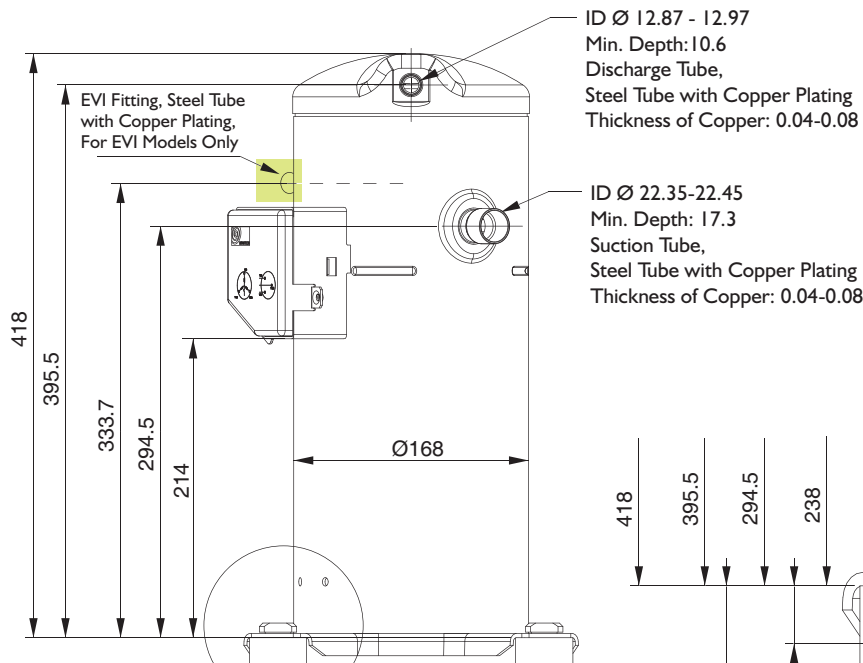
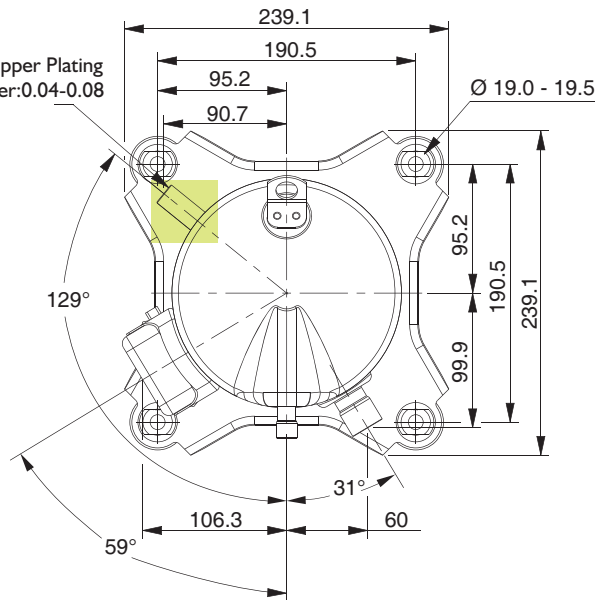
Capacity @ 11K Super Heat, 8.3K Subcooling

W/O EVI

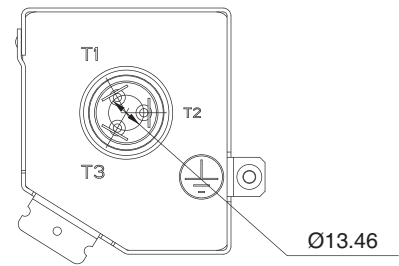


W/EVI

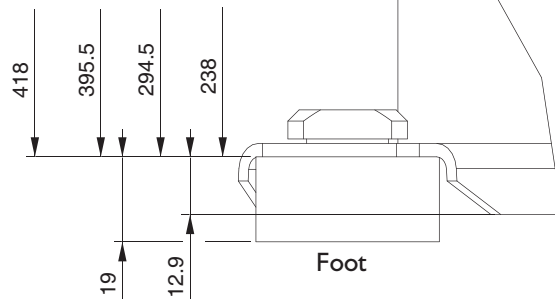
ID Ø 12.80 - 12.90  
Depth: 9.8-10.0  
EVI Fitting,  
Steel Tube with Copper Plating  
Thickness of Copper: 0.04-0.08



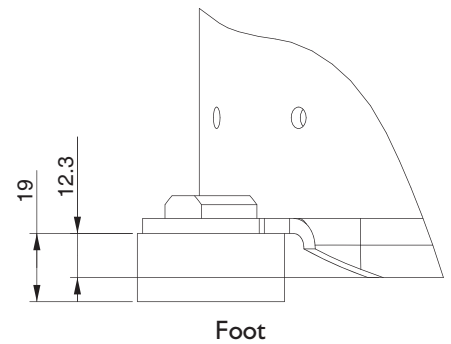
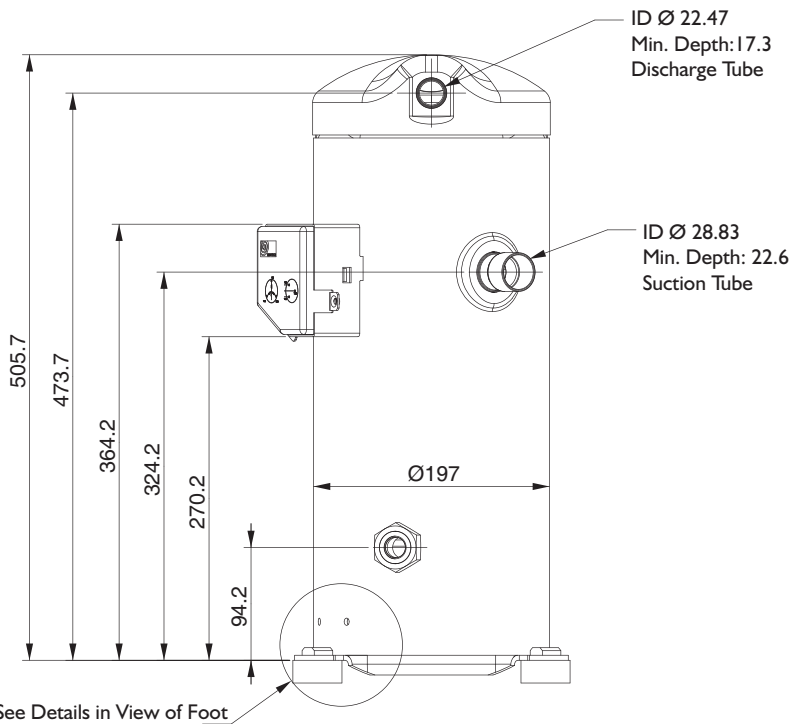
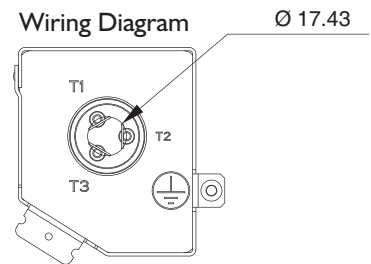
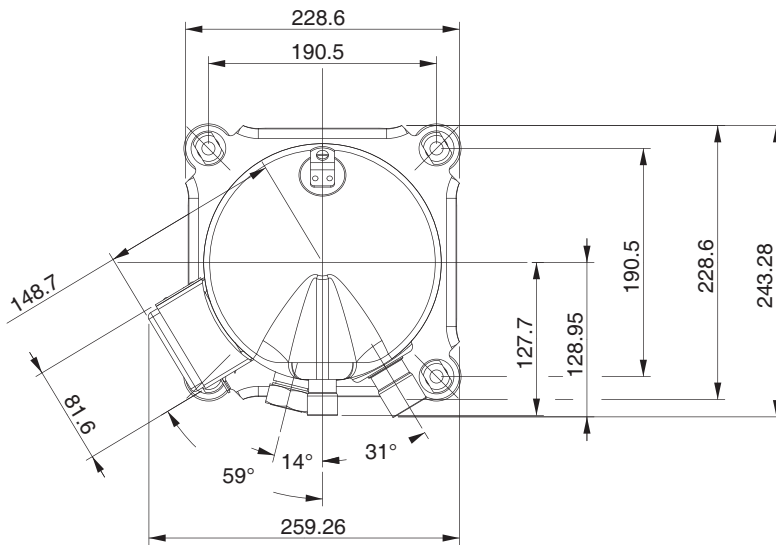
Wiring Diagram



See Details in View of Foot



Foot





**Invotech Scroll Technologies**

No. 68, Dongnan Road, Changshu, Jiangsu, PRC.

TEL: +86 512 5290 5990

FAX: +86 512 5290 5996

[www.invotech.cn](http://www.invotech.cn)